

ARMSTRONG

educational trust



July E-Newsletter

SCHOLARSHIP RECIPIENTS RECOGNIZED

INSIDE THIS ISSUE:	
A.C. Community Foundation Seminar	2
Graduate Course for Educators	2
Vacuum Technology Class	2
Adventure Camp	3
Lenape Adult Ed. Summer Courses	3
Workforce Forum Update	4
Community Connections Meeting	4
Masters Degree for Educators	5

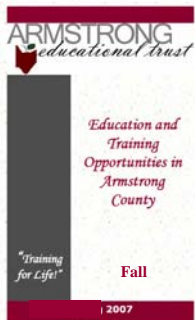


Pictured above: Rev. Kirk Bish, President of Armstrong Educational Trust Board of Directors, presenting scholarships to Stephen B. Shiring, Jr. and Allyson Wright. (Ashley Lee Lennox absent from photos)

At the June Armstrong Educational Trust Board of Directors meeting, the recipients of the **Ralph and Mary Lou McAllister Scholarship** and the **Helen and Fred Ortman Scholarship** were recognized.

Recipients of the McAllister scholarships in the amount of \$2500 each are Ashley Lee Lennox, Stephen B. Shiring, Jr., and Allyson Wright. The recipient of the Ortman scholarship in the amount of \$1000 is Ashley Lee Lennox.

Fall Post Secondary Education and Training Opportunities Booklet



The fall booklet listing post secondary education and training opportunities will be delivered to all postal customers in Armstrong County in August.

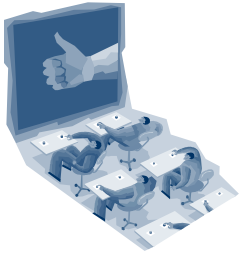
If you do not receive a copy by the middle of August, please contact the Trust at (724) 543-2599 or armeduded@alltel.net to request a copy.

Please make note of the many programs and services offered by educational providers to the residents of the County.

If you have ideas or suggestions for other programs or courses, please send them to Armstrong Educational Trust.

ARMSTRONG COUNTY
**COMMUNITY
FOUNDATION**

**SPECIAL
FUNDRAISING SEMINAR**



The Armstrong County Community Foundation will offer a web-based seminar, **Fundamentals of Grassroots Fundraising**, on Monday, July 24 from 12:30 to 2:30 PM at the Armstrong Education Center.

The cost of the program which includes the 2006 edition of Grassroots Fundraising Journal's "Guide to Fundraising in Rural Communities" is \$25 (or \$20/person for 2 or more from the same organization.)

For more information, contact the Foundation at mindy@accfound.org



**GRADUATE COURSE
FOR EDUCATORS**



Classroom Management: Orchestrating a Community of Learners, a 3-credit course for K-12 educators, will be offered at the Armstrong Education Center from July 10-14.

This course is designed to help teachers learn and practice skills for orchestrat-

ing classroom life and learning so that instruction flows smoothly, student misbehavior is minimized, and learning potential is maximized.

For more information, contact PLS at 866-PLS-CLAS (866-757-2527) or www.plsweb.com.



MYERS VACUUM
REPAIR SERVICES INC.

**VACUUM TECHNOLOGY
CLASS**

Basics of Vacuum Technology will be offered at the Armstrong Education Center July 10-12. For more information, contact Dean Myers at Myers Vacuum Repair Service at (724) 545-8331.



ADVENTURE CAMP AT CROOKED CREEK ENVIRONMENTAL LEARNING CENTER

The **Junior Naturalist and Outdoor Adventure Camp** for 8-12 year-olds will be offered at the Crooked Creek Environmental Learning Center the week of July 16-20.

The focus of the camp is to safely introduce participants to outdoor adventure sports,

teach environmental education, and participate in environmental enhancement.

Some of the activities include: map and compass, knot tying, geocaching, canoeing, and rappelling.

For more information, contact the ELC at (724) 763-6316



LENAPE ADULT EDUCATION COURSES

Lenape Adult Education is offering summer courses at the Armstrong Education Center

Class	Date	Time	Cost
Microsoft Excel I	Mon. & Wed., July 9 - July 23	6:00-8:30 pm	\$99.00 Text incl. to be used for Excel I & II
Microsoft Excel II	Wed. & Mon., Aug. 1 - Aug. 13	6:00-8:30 pm	\$69.00 Add \$69.00 to registration fee if text is needed
Microsoft Word I	Tues. & Thurs., July 10 - 24	6:00-8:30 pm	\$99.00 Text incl. to be used for Word I and Word II
Microsoft Word II	Tues. & Thurs., July 31 - Aug. 14	6:00-8:30 pm	\$69.00 Add \$69.00 to registration if text is needed

To register, contact Lenape at (724) 763-7116, extension 316 or champagne@lenape.k12.pa.us

WORKFORCE FORUM UPDATE



The Steering Committee of the **Armstrong County Forum for Workforce Excellence** is preparing a line up of activities for the 2007-2008 academic year.

In preparation for the year, the committee is collecting information from businesses willing to

host educators and/or students at their workplaces for activities such as tours, job shadowing, career development discussions, and internships.

If your business is interested, please contact the Trust at (724) 543-2599 or davidaet@alltel.net.

ARMSTRONG COUNTY
**COMMUNITY
FOUNDATION**

COMMUNITY FOUNDATION HOSTING MEETING



On Wednesday, July 11th, 2007, Community Connections will lead a brainstorming session co-hosted by the [Armstrong County Community Foundation](#) and the [Armstrong County Tourist Bureau](#) from 6 - 8:30 pm at Armstrong County CareerLink in West Hills Industrial Park, 77 Glade Park Drive, Kittanning, (next door to the Armstrong Education Center) to brainstorm

local projects to help Armstrong County celebrate our region's 250th.

Up to \$50,000 in grant money is available! All interested individuals and groups are welcome to attend. Food and beverages will be provided.

For more information contact the Armstrong County Community Foundation at (724) 548-5897 or www.accfound.org.

EDUCATIONAL LINKS

www.pheaa.org

This is one of the first stops PA residents should make. This site offers information on the PA State Grant Program, PA loan forgiveness programs, and other PA award programs.

[NewChoices/New Options](#) Career Development Services 1-800-830-3248

Career & Personal Development **FREE** Course, Provides career assessments & job search strategies, communication and goal-setting skills, interview preparation.

www.furtheryoureducation.org

Developed to help guide non-traditional students through the transfer process from a community college or 2-year school to a 4-year school.

www.careerkey.org

Match your skills with possible careers

www.pavcc.org/index.shtml

PA Virtual Community College

www.chc.hcwp.org

Explore health care careers

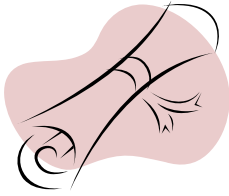
www.acinet.org

Learn about fast growing jobs

GANNON
UNIVERSITY

Northwestern Pennsylvania's Premier Catholic University

MASTERS DEGREE FOR EDUCATORS



Gannon University offers the **Master of Education in Curriculum and Instruction** in off-campus cohorts.

One cohort began the program at the Armstrong Education Center last summer, and a second cohort begins the program this summer. The Mas-

ters degree is a 37 credit, non-thesis, portfolio-based program. Twenty-four (24) credits are taken from the Gannon core and up to twelve (12) credits earned from [Gannon/Performance Learning Systems \(PLS\)](#) courses may be used as electives. The program is completed with a 1 credit portfolio.

Summer & Online Option: This option allows students to complete the majority of the coursework in the summertime with two online courses during the school year. The schedule is as follows:

Summer 2007	Three one-week live instruction courses (1 in June, 1 in July, 1 in August)
Fall 2007	An online course with one day of live instruction
Spring 2008	An online course with one day of live instruction
Summer 2008	Three one-week live instruction courses (1 in June, 1 in July, 1 in August)

Students take the Gannon/PLS electives whenever and wherever it is most convenient to them.

Objectives

The School of Education offers a program leading to a Master of Education degree designed to facilitate the highest level of teacher performance. The core courses focus on the mastery of teaching effectiveness for teachers in grades K through 12. The objectives enable the teacher to:

- Develop the verbal skills and strategies that produce mastery of positive communication
- Acquire skills that increase student thinking and self-esteem through the instruction process
- Use instructional strategies to reach the learning style preferences of students
- Create lesson formats and instructional processes (induction, deduction, inquiry, analysis and synthesis) that match the learning and thinking styles of students

Admission Requirements:

- Complete an application for admission and submit three letters of recommendation
- Official transcripts showing a Bachelor's degree from a regionally accredited institution.
- Transcripts are only considered official when they are sent *directly* to Gannon from all schools attended. Evidence by previous academic record that the applicant has the general ability and preparation necessary to pursue graduate study successfully

For more information on the program, contact Gannon University at (814) 871-7533 or grandine002@gannon.edu



81 Glade Drive
Kittanning, PA 16201

Phone: 724-543-2599
1-800-201-3712
Fax: 724-545-6127
E-mail: armeduded@alltel.net



WE'RE ON THE WEB!
www.armstrongedutrust.org

"Training for Life"

AET Mission Statement

The Armstrong Educational Trust brings post-secondary education and training opportunities to Armstrong County and surrounding areas.

To accomplish this we:

- Survey education and training needs.
- Convene educational providers to identify programs that meet those needs.
- Provide instructional facilities and a computer lab.
- Provide financial aid and career counseling to adults.
- Market provider program offerings.